



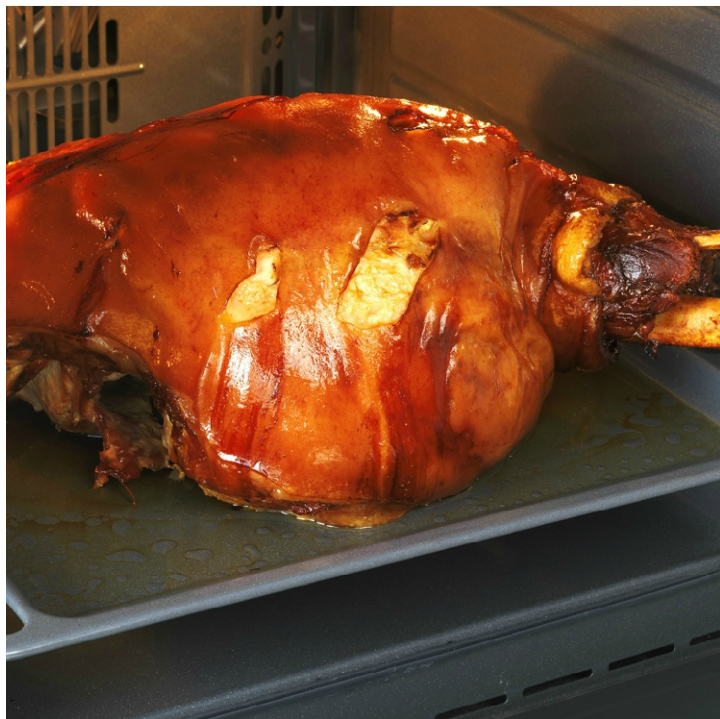
ULTIMA

EG900X S

Dual Fuel Range Cooker



Dimensions: H 850 x W 900 x D 600 (mm)
Colour: Inox



TECHNICAL SPECIFICATIONS



EG900X S

Inox



Model

Colour

KEY INFORMATION

Plug Type	Requires Hard Wiring
Timer	Electronic Start/End
Net Weight (Kg)	67.0kg
Gross Weight (Kg)	76.0
Dimensions (mm) Height/Width/Minimum Installed Depth	850x900x600
Package Dimensions (mm) Height/Width/Depth	950x960x690
Built in or Freestanding	Freestanding

HOB

No. Of Gas Burners	5
Rear Left Area - power (W)	1650W
Rear Right Area - power (W)	1000W
Middle Middle Area - power (W)	3250W
Front Left Area - power (W)	1650W
Front Right Area - power (W)	3000W
Hob Material	Stainless Steel
No. Of Hob Pan Supports	3
Pan Support Type	Cast Iron

MAIN CAVITY

Net Capacity (l)	78
Type	9 Multifunction
Grill	Electric
Grill Max Power (W)	2000
Cleaning System	Manual
Lighting Type	Normal

ENERGY/PERFORMANCE INFORMATION

Energy Efficiency Class	B
Forced Convection Energy Consumption (kWh)	1.19
Natural Convection Energy Consumption (kWh)	1.33
Gas Power	10550.0
Absorbed Power	2850-3100

ELECTRICAL

Supply Voltage	230-240
Absorbed Current (A)	12
Fuses	Mono 230 V - 16 A